



Electric Actuators

WE Series Weatherproof
CSA Approved NEMA 4 & 4X
500-25,900 in.-lbs. torque

XE Series Explosion Proof
ATEX Certified Eexd II B T4
690-25,900 in.-lbs. torque

AWWA
C504-93

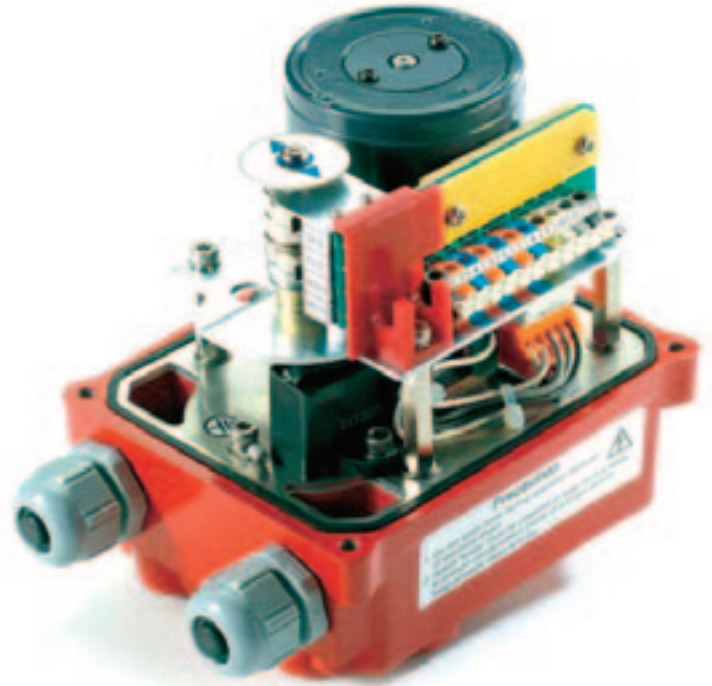


WE Series

The WE-500 Electric Actuator is an extremely rugged design actuator used for small ball valves (less than 2"), dampers and other quarter-turn devices. The actuator is NEMA 4X and includes a visual indicator, two auxiliary switches and a compartment heater. A convenient wrench manual override shaft is standard on the WE-500. This actuator is the clear choice when a compact, efficient electric actuator is required!

FEATURES

- ▶ Compact and light due to high grade aluminum alloy housing.
- ▶ High resistance to corrosion due to hard anodizing on inside and outside with polyester powder coating on external surface
- ▶ Output torque: 530 in-lbs.
- ▶ The actuator motor is a reversible, high torque and low current design.
- ▶ Weatherproof (IP67, NEMA 4, 4X)



STANDARD CONFIGURATION

- ▶ Manual override
- ▶ Wide, easy mounting base standard to ISO5211 (F03/F05/F07)
- ▶ Standard four limit switches. Two for operation, 2 auxilliary dry contacts
- ▶ Captive cover bolt
- ▶ Space heater
- ▶ Limit switches for easy and tight setting
- ▶ Terminal block (11P)
- ▶ Standard color : Red



OPTION CONFIGURATION

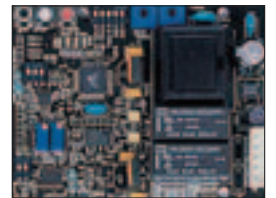
Position Indication Unit (Potentiometer kit, PIU)

High resolution potentiometer with precisely machined gearing directly engaged with drive shaft provides continuous monitoring of position of valve and actuator.



TMC3 Electronic Modulating Card

- ▶ Auto Calibration for Easy Setup
- ▶ 10 Bit Microprocessor controller for precise positioning and control
- ▶ 4-20mA, 1-5mA, 0-10 VDC, 1-5 VDC, 0-135 Ohm or Command Signal Potentiometer
- ▶ TMC3 Can be programmed to Fail in Place, Fail CW, or Fail CCW on loss of command signal
- ▶ Characterized Control-Linear, quick opening (Square root), or Equal Percentage (Square)
- ▶ OnBoard 4-20 mA transmitter (optional)



AC/DC 24V Control Unit

Dip Switch

Mode	1	2
DC	ON	OFF
AC	OFF	ON

AC or DC Power input(2-wire) by user



PERFORMANCE

TYPE (MODEL)	MAXIMUM OUTPUT TORQUE	OPERATING TIME 60/50Hz	MOUNTING SIZE	MOTOR CLASS FRAME SIZE	RATED CURRENT(A) 60Hz			DUTY CYCLE	NUMBER OF HANDLE TURN	WEIGHT
					AC 1PH. 60Hz/50H		AC/DC			
					110V	220V	24V			
WE-500	530	12/14	FO3/F05/F07	6 * 70	0.4 / 0.39	0.2 / 0.19	0.2	S2	N	Lbs.
								70%	8	6.61

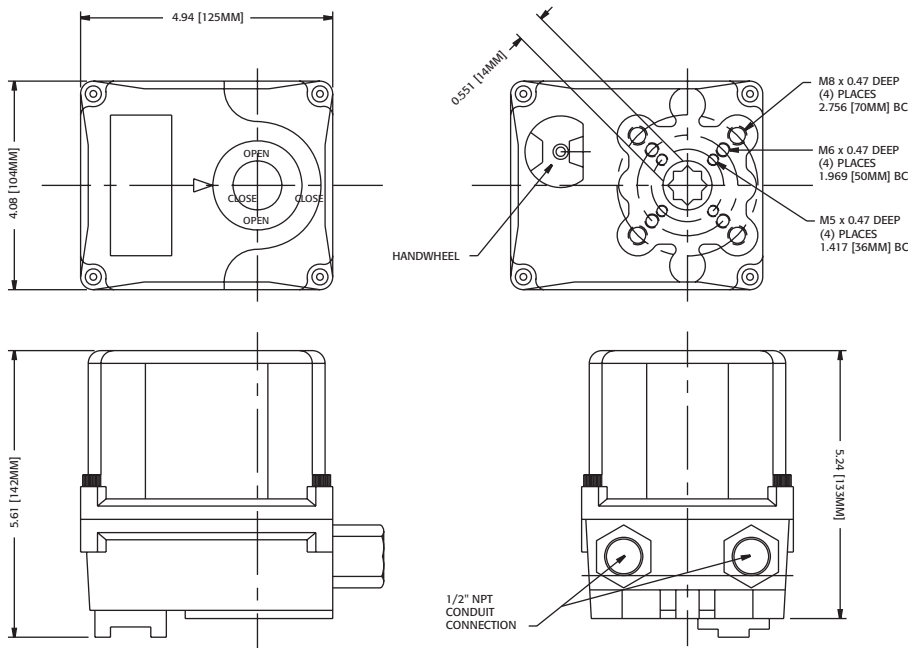
STANDARD SPECIFICATION

Enclosure	Weatherproof enclosure IP67, NEMA 4, 4X
Power supply	110/220V AC 1PH, 50/60Hz, ±10%, 24V AC/DC
Duty cycle	70%
Motor	Reversible motor
Limit switches	Open/Close, SPDT, 5A 125 VAC, 3A 250 VAC, 0.4A 125 VDC, 0.2A 250 VDC
Additional limit switches	Open/Close, SPDT, 5A 125V VAC, 3A 250 VAC, 0.4A 125 VDC, 0.2A 250 VDC
Space heater	2W (110/220V AC) Anti-condensation
Manual override	Handwheel (hexagon design)
Cable conduit	Two 1/2" NPT
Movement angle	320° ±10°
Ambient temperature	-4°F - 158°F (optional -40° Low Temp Kit)
External coating	Polyester powder coating

OPTION SPECIFICATION

- Potentiometer unit (1K)
- (TMC) Electronic Modulating Card
- 4-20mA, 1-5mA, 0-10 VDC, 1-5 VDC,
- 0-135 Ohm Command Signal
- Current position transmitter
- (Output 4~20mA DC)
- Multi(24VAC/DC)
- DC motor (24VDC)
- Local control unit
- remote/local
- open/stop/close

DIMENSION



Electric Actuator WE/XE Series



TYPE (MODEL)	Maximum output torque In-lbs.	Operating time(sec.) 60/50Hz 90°	Motor class F frame size W * F	Rated current(A) 60Hz/50Hz				Duty cycle %	Number of handwheel turns N	Weight Lbs.
				1 Phase		3 Phase				
				110V	220V	380V	440V			
WE-690	690	13/16	15 * 70	1.10/0.95	0.55/0.54	N/A	N/A	70	10	16.4
WE-1350	1350	21/25	40 * 80	1.65/1.67	0.88/0.84	0.31/0.31	0.30/0.31	70	11	36.7
WE-1700	1700	21/25	40 * 80	1.67/1.67	0.89/0.85	0.31/0.31	0.30/0.31	70	11	36.7
WE-2640	2640	26/31	40 * 90	1.85/1.86	0.92/0.92	0.35/0.35	0.34/0.34	70	13.5	48.6
WE-4400	4400	26/31	90 * 90	3.60/3.62	1.55/1.58	0.59/0.59	0.58/0.58	70	13.5	50.8
WE-5200	5200	26/31	90 * 90	3.65/3.62	1.60/1.62	0.60/0.59	0.59/0.58	70	13.5	50.8
WE-6900	6900	31/37	180 * 90	4.10/4.10	2.15/2.20	0.85/0.85	0.79/0.79	70	16.5	64.0
WE-10500	10500	31/37	180 * 90	4.20/4.10	2.35/2.30	0.87/0.87	0.81/0.81	70	16.5	64.0
WE-17500	17500	93/112	180 * 90	4.10/4.10	2.15/2.30	0.85/0.85	0.79/0.79	70	49.5	167.0
WE-25900	25900	93/112	180 * 90	4.20/4.10	2.35/2.30	0.87/0.87	0.81/0.81	70	49.5	167.0

NOTE: Substitute "XE" for "WE" to specify explosion-proof design

Standard Specifications

Enclosure	Weatherproof enclosure IP67, NEMA 4 and 6
AWWA	Conforms to AWWA C504-93 requirements
Power supply	110/220V AC 1PH, 220/380/440/460/480VAC, 3 Phase, 50/60Hz, ±10%
Control power supply	110/220V AC 1PH, 50/60Hz, ±10%
Duty cycle(on-off)	70% Max 1800 start/hour
Duty cycle(modulating)	70% Max 1800 start/hour
Motor	Reversible Induction motor
Limit switches	Open / Close, SPDT, 16A 1/2HP 125/250VAC, 0.6A 125VDC, 0.3A 250VDC
Additional limit switches	Open / Close, SPDT, 16A 1/2HP 125/250VAC, 0.6A 125VDC, 0.3A 250VDC
Torque switches	Open / Close, SPDT, 16A 1/2HP 125/250VAC, 0.6A 125VDC, 0.3A 250VDC
Stall protection	Built-in thermal protection
Travel angle	90°± 10°
Indicator	Continuous position indicator
Manual override	Declutching mechanism
Self locking	Provided by double worm gearing
Mechanical stopper	Open / Close(external adjustable screws)
Space heater	7-10W(110/220V AC) Anti-condensation
Cable Conduit	Two 3/4" NPT
Lubrication	Grease moly (EP type)
Terminal block	Spring loaded lever push type
Materials	Steel, Aluminium alloy, Al bronze, Polycarbonate
Ambient temperature	-4°F – 158°F (optional -40° Low Temp Kit)
Ambient humidity	90% RH Max.(non-condensing)
External coating	Anodizing treatment before Dry powder, Polyester, Munsell no. 5R 3.5/12

Option Specifications

Explosion-proof enclosure (Eexd II B T4, Eexd II C T4)

Watertight enclosure (IP68 10M 72HR)

Potentiometer unit (1K ~10K)

Proportional control unit (input, output 0~10V DC, 4~20mA DC)

Additional torque switches (SPDT x 2EA 250V AC 10A Rating)

Semi-Integral control unit (Local/Remote Selector Switches)

Intelligent Digital control unit (Local/Remote Selector Switches)

Current position transmitter (output 4~20mA DC)

Extension 120°, 180°, 270° turn

Duty Cycle 70% max (in Ambient temperature)

DC motor (24V DC)

AC/DC 24V control

Lever plate actuator

Signal lamp unit (white-power on, red-close, green-open, yellow-over torque)

Fire Proofing Actuator 1050 ±5°C/50 min

Fire Proofing Actuator 250 ±5°C/150 min

KOSHA Certified (equivalent to Class 1, Groups C and D. Div. 1)
ATEX certification

WE/XE Series

WE/XE Series

WE/XE Series

except WE/XE-690

except WE/XE-690

except WE/XE-690

WE/XE Series

except WE/XE-17500, 25900

except WE/XE-690

WE/XE-690—WE/XE-2640

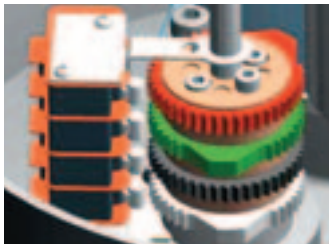
WE/XE-690—WE/XE-2640

except WE/XE-690

except WE/XE-690

Consult factory

Consult factory

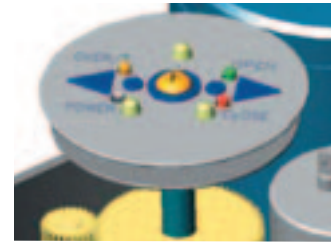


Cam Block

- ▶ 2 travel limit switches for operation
- ▶ 2 auxiliary limit switches as dry connect for customer usage
- ▶ Easy setting from upside by two screws for tight lockup
- ▶ Each cam can be set independently

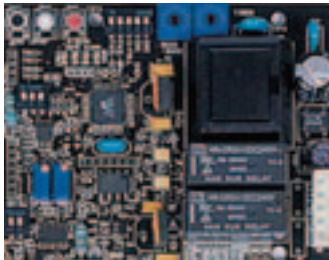


D-Type Cam



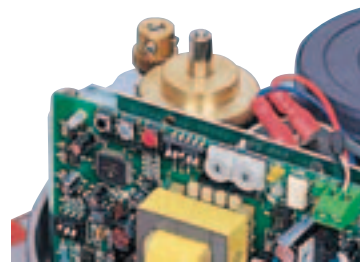
Signal LED Unit

- ▶ Large indicator with 4 monitoring lamps (Power, over torque, open and close)



TMC3 Electronic Modulating Card

- ▶ Auto Calibration for Easy Setup
- ▶ 10 Bit Microprocessor controller for precise positioning and control
- ▶ 4-20mA, 1-5mA, 0-10 VDC, 1-5 VDC, 0-135 Ohm or Command Signal Potentiometer
- ▶ TMC3 Can be programmed to Fail in Place, Fail CW, or Fail CCW on loss of command signal
- ▶ Characterized Control-Linear, quick opening (Square root), or Equal Percentage (Square)
- ▶ OnBoard 4-20 mA transmitter (optional)



Potentiometer Kit

10K ohm, high resolution

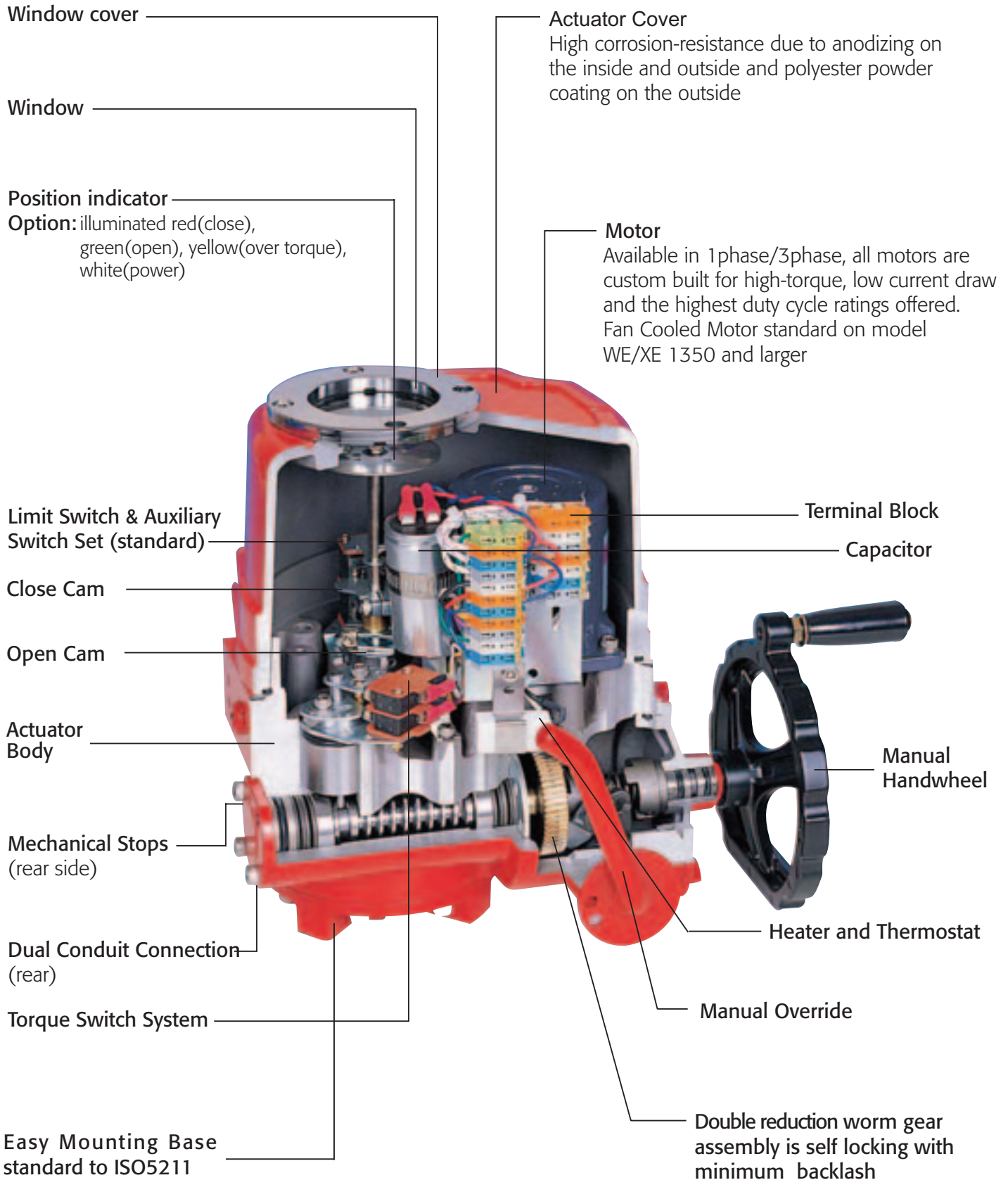


Fire Proofing Actuator



Removable Drive Bushing

Construction



Standard Configuration



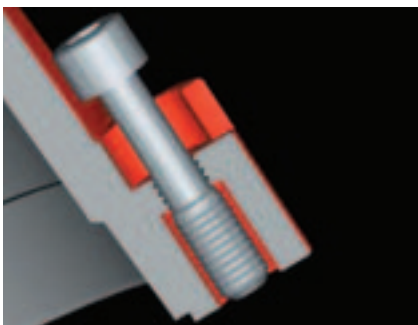
Terminal block

- ▶ Extra terminals for customer's convenience
- ▶ Spring Loaded Terminal Strip Provides Secure Connection



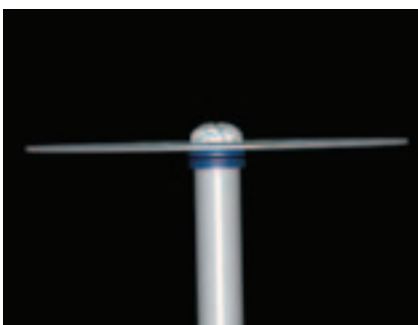
Heater

- ▶ Ceramic housing with thermostat to eliminate condensation (7-10 watt Standard)
- ▶ Optional High Wattage Heater for Low Temp applications to -40



Captive cover bolt

- ▶ Cover bolts are specially designed to prevent loosening during maintenance or installation
- ▶ All external bolts are stainless steel for rust prevention.



Indicator sustained by spring

- ▶ Direction of visual indicator is set by factory
- ▶ In case of changing its direction, just grip the indicator plate and change the position.
- ▶ Spring beneath indicator plate sustains the set position
- ▶ No need to loosen screw and tighten it again

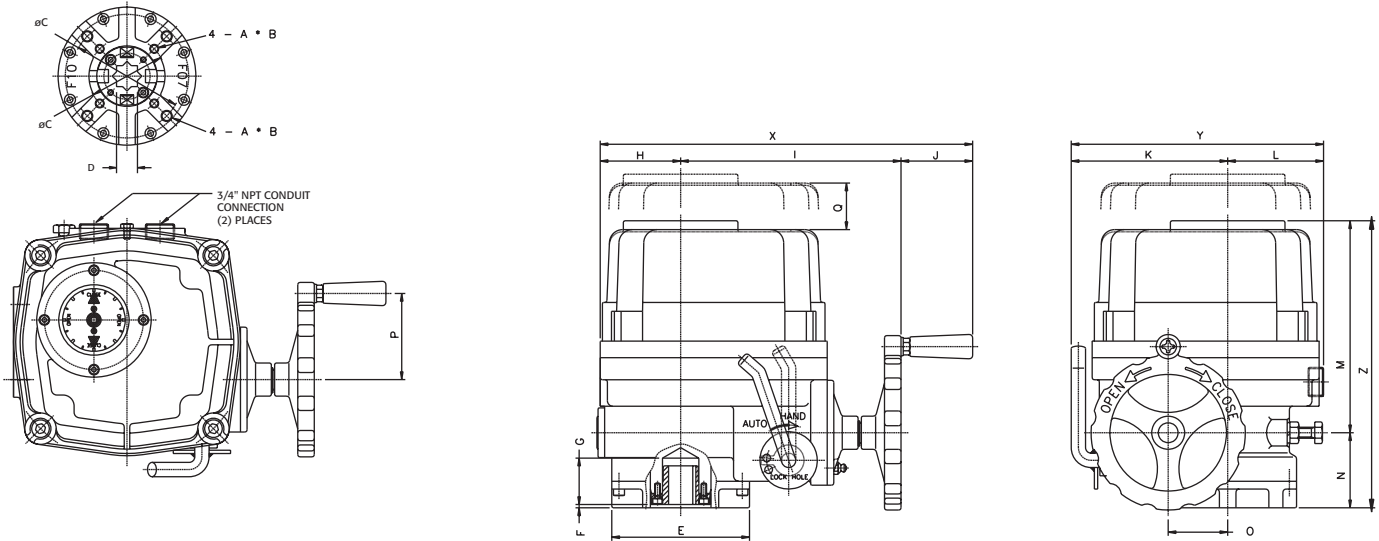


Slot on window cover for draining rainwater

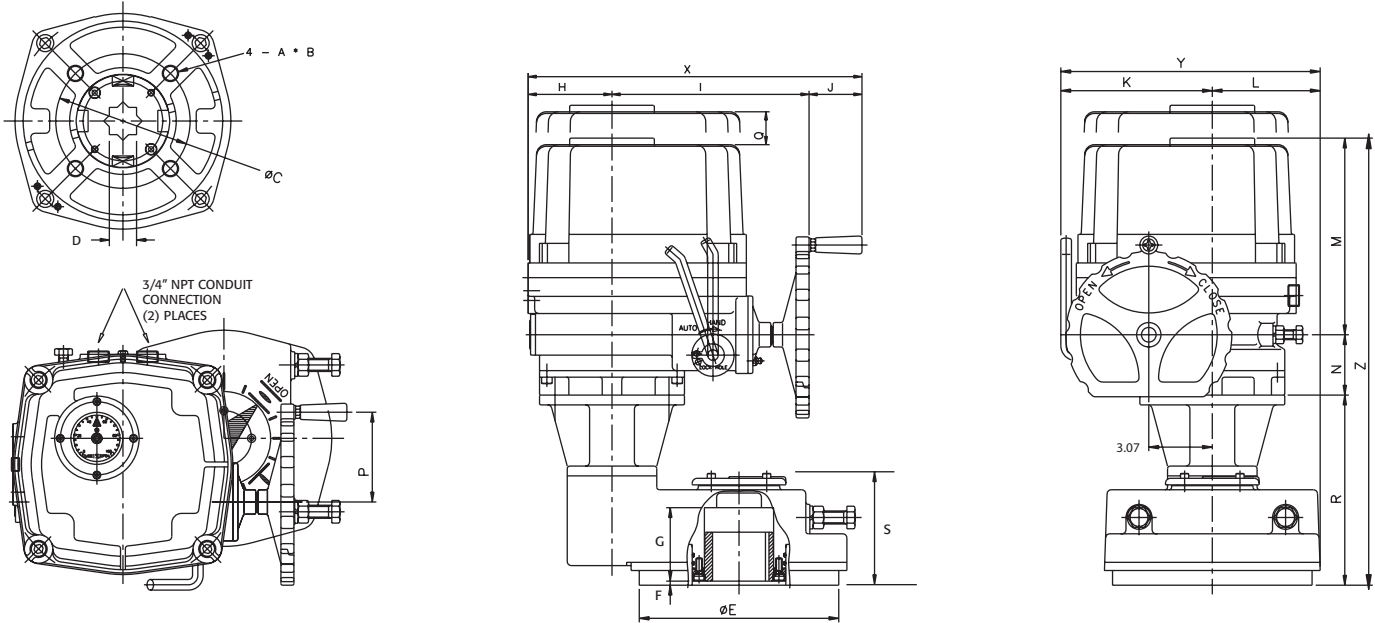
- ▶ A drain slot is provided to eliminate water buildup on window

Dimensional Drawing

WE/XE-1350, 1700, 2640, 4400, 5200, 6900, 10500



WE/XE-17500, 25900



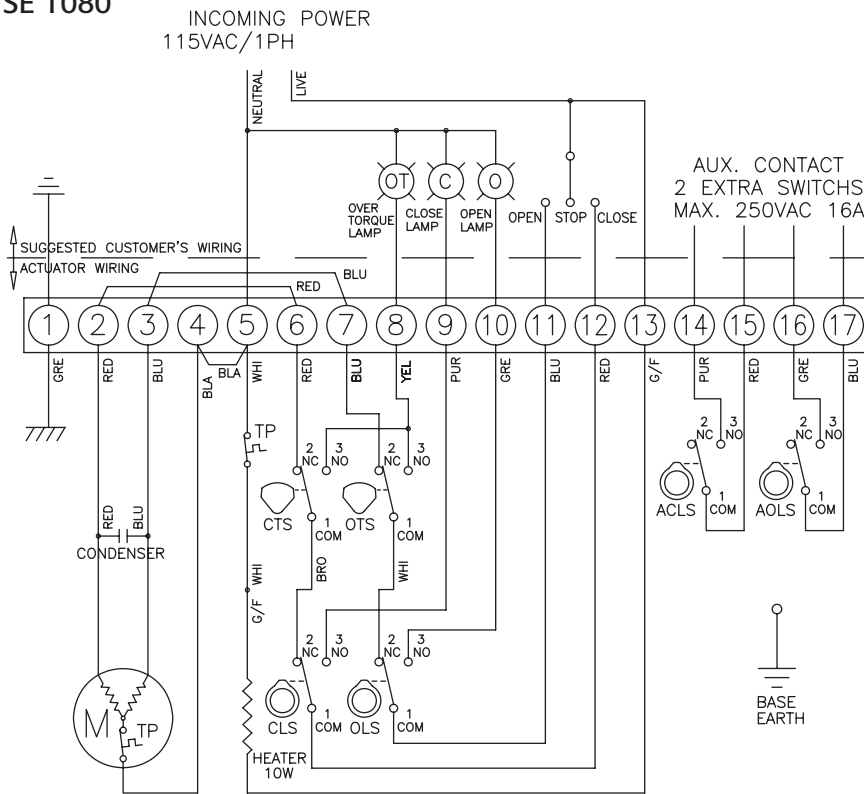
DIMENSIONS

Units (inches)

Model	ISO 5211	A	B	C	D sq	E	F	G	H	I	J	K	L	M	N	O	P	Q	R	S	X	Y	Z
WE/XE-690	F07	M8	0.47	2.756	0.669	3.46	0.12	1.26	1.97	6.18	2.01	3.94	2.76	6.57	2.09	1.57	2.36	4.72	--	--	10.16	6.69	9.25
WE/XE-1350	F07/F10	M8 / M10	0.47 / 0.59	2.756 / 4.016	0.748	4.92	0.12	1.65	2.87	7.87	2.56	5.59	3.43	7.56	2.68	2.13	3.07	6.30	--	--	13.31	9.02	10.55
WE/XE-1700	F07/F10	M8 / M10	0.47 / 0.59	2.756 / 4.016	0.748	4.92	0.12	1.65	2.87	7.87	2.56	5.59	3.43	7.56	2.68	2.13	3.07	6.30	--	--	13.31	9.02	10.55
WE/XE-2640	F10/F12	M10 / M12	0.59 / 0.71	4.016 / 4.921	1.063	5.83	0.12	1.93	3.23	8.70	2.56	6.30	3.90	8.70	2.72	2.56	3.07	7.09	--	--	14.49	10.20	11.42
WE/XE-4400	F10/F12	M10 / M12	0.59 / 0.71	4.016 / 4.921	1.063	5.83	0.12	1.93	3.23	8.70	2.56	6.30	3.90	8.70	2.72	2.56	3.07	7.09	--	--	14.49	10.20	11.97
WE/XE-5200	F10/F12	M10 / M12	0.59 / 0.71	4.016 / 4.921	1.063	5.83	0.12	1.93	3.23	8.70	2.56	6.30	3.90	8.70	2.72	2.56	3.07	7.09	--	--	14.49	10.20	11.97
WE/XE-6900	F14	M16	0.95	5.512	1.417	7.01	0.12	2.24	4.06	9.53	2.56	7.32	4.37	9.49	2.91	3.07	4.33	8.27	--	--	16.14	11.69	12.99
WE/XE-10500	F14	M16	0.95	5.512	1.417	7.01	0.12	2.24	4.06	9.53	2.56	7.32	4.37	9.49	2.91	3.07	4.33	8.27	--	--	16.14	11.69	12.99
WE/XE-17500	F16	M20	1.18	6.496	1.417	9.65	0.20	3.54	4.06	9.53	2.56	7.32	5.24	9.49	2.91	3.07	4.33	8.27	9.17	5.24	16.14	12.56	22.17
WE/XE-25900	F16	M20	1.18	6.496	1.417	9.65	0.20	3.54	4.06	9.53	2.56	7.32	5.24	9.49	2.91	3.07	4.33	8.27	9.17	5.24	16.14	12.56	22.17

Wiring Connection

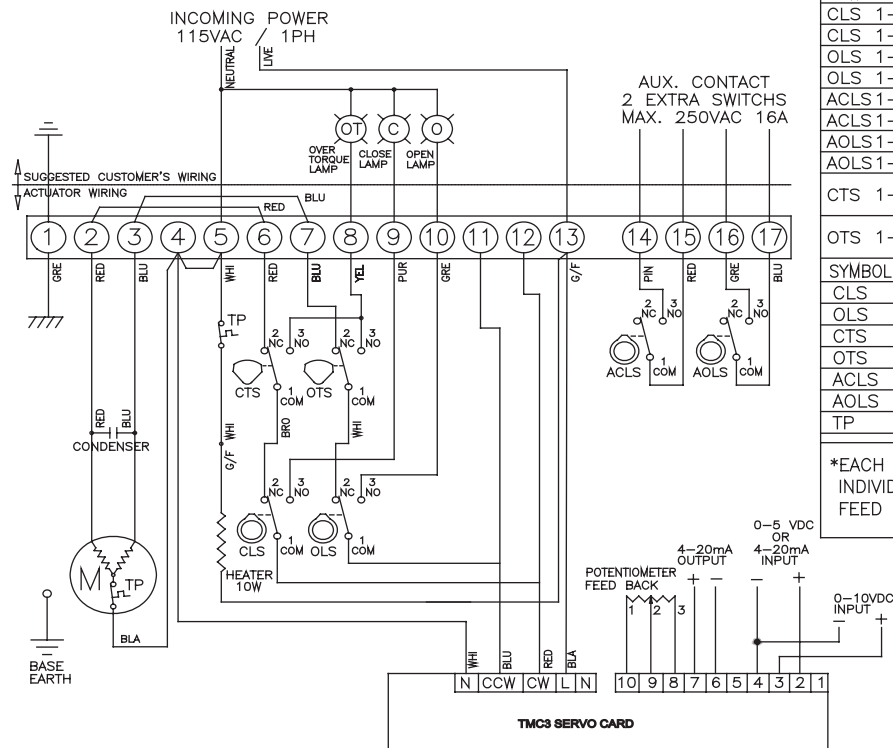
Two Position 115 VAC/1 Ph SE 1080



TORQUE AND LIMIT SWITCH OPERATION			
SWITCH	CLOSE ←	INTERMEDIATE	→ OPEN
CLS 1-2			
CLS 1-3			
OLS 1-2			
OLS 1-3			
ACLS 1-2			
ACLS 1-3			
AOLS 1-2			
AOLS 1-3			
CTS 1-3	* CLOSING TORQUE SWITCH INTERRUPTS CONTROL IF MECHANICAL OVERLOAD OCCURS DURING CLOSING CYCLE		
OTS 1-3	* OPENING TORQUE SWITCH INTERRUPTS CONTROL IF MECHANICAL OVERLOAD OCCURS DURING OPENING CYCLE		
SYMBOL	DESCRIPTION	RATING	
CLS	CLOSE LIMIT SWITCH	250VAC 10A	
OLS	OPEN LIMIT SWITCH	250VAC 10A	
CTS	CLOSE TORQUE SWITCH	250VAC 10A	
OTS	OPEN TORQUE SWITCH	250VAC 10A	
ACLS	AUX. CLOSE LIMIT SWITCH	250VAC 16A	
AOLS	AUX. OPEN LIMIT SWITCH	250VAC 16A	
TP	THERMAL PROTECTOR	250VAC 15A	

*EACH ACTUATOR SHOULD BE POWERED THROUGH IT'S OWN INDIVIDUAL SWITCH OR RELAY CONTACTS TO PREVENT CROSS FEED BETWEEN TWO OR MORE ACTUATORS.

Proportional 115 VAC/1 Ph SE 1052



TORQUE AND LIMIT SWITCH OPERATION			
SWITCH	CLOSE ←	INTERMEDIATE	→ OPEN
CLS 1-2			
CLS 1-3			
OLS 1-2			
OLS 1-3			
ACLS 1-2			
ACLS 1-3			
AOLS 1-2			
AOLS 1-3			
CTS 1-3	* CLOSING TORQUE SWITCH INTERRUPTS CONTROL IF MECHANICAL OVERLOAD OCCURS DURING CLOSING CYCLE		
OTS 1-3	* OPENING TORQUE SWITCH INTERRUPTS CONTROL IF MECHANICAL OVERLOAD OCCURS DURING OPENING CYCLE		
SYMBOL	DESCRIPTION	RATING	
CLS	CLOSE LIMIT SWITCH	250VAC 10A	
OLS	OPEN LIMIT SWITCH	250VAC 10A	
CTS	CLOSE TORQUE SWITCH	250VAC 10A	
OTS	OPEN TORQUE SWITCH	250VAC 10A	
ACLS	AUX. CLOSE LIMIT SWITCH	250VAC 16A	
AOLS	AUX. OPEN LIMIT SWITCH	250VAC 16A	
TP	THERMAL PROTECTOR	250VAC 15A	

*EACH ACTUATOR SHOULD BE POWERED THROUGH IT'S OWN INDIVIDUAL SWITCH OR RELAY CONTACTS TO PREVENT CROSS FEED BETWEEN TWO OR MORE ACTUATORS.

Wiring drawings are provided upon request.

Intelligent & Integral Control Unit (Special Application)

Intelligent Digital Control Unit

- ▶ Light, compact and integral design
- ▶ Wide range of electric power application (AC 220V~AC480V/3 phase)
- ▶ Built-in auto phase discriminator (easy and convenient wiring)
- ▶ Digital indicator with number, bar graph, menu and (3)LED lamps
- ▶ Separate terminal chamber (Reliable against water, vibration, temperature, etc.)
- ▶ Easy application for WE-Series Actuators
- ▶ Various options available



Semi-Integral Control Unit

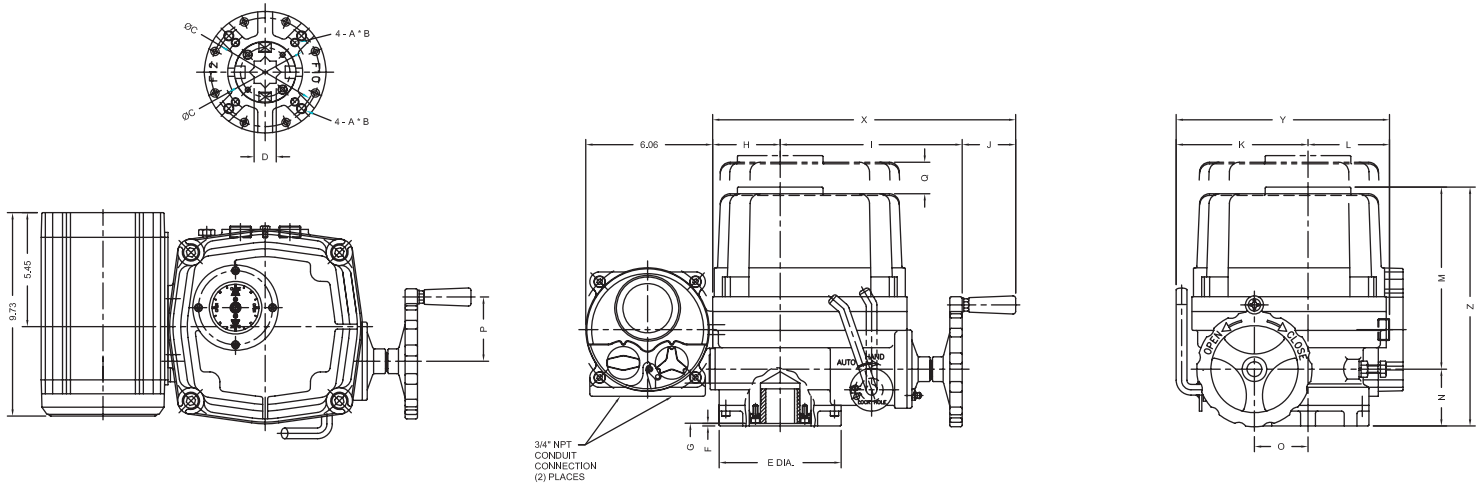
- ▶ Light, compact and integrated design (IMS, Local/Remote control)
- ▶ Wide range of electric power application (AC 115V~AC480V/1-phase or 3 phase)
- ▶ Phase protect monitoring by LED in case of wrong wiring
- ▶ Easy application for WE-Series Actuators
- ▶ Various option available



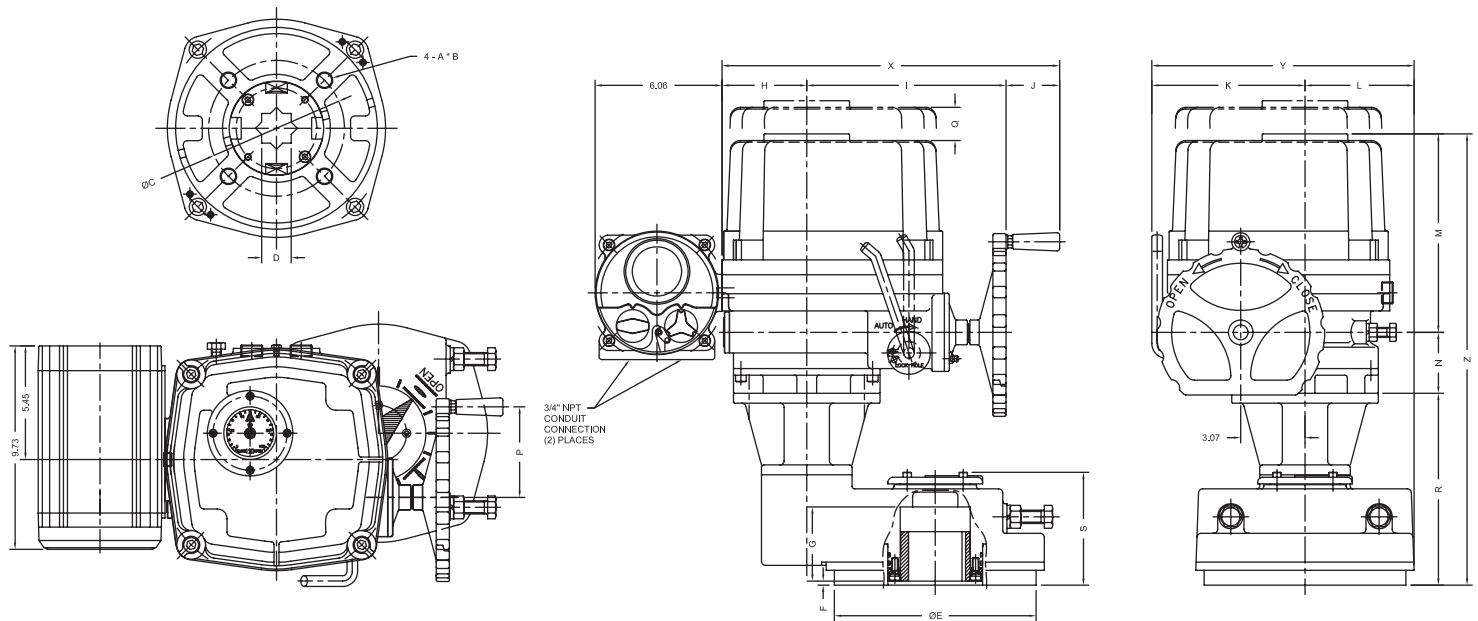
LED lamp signal	
White	○ : Power
Blue	● : Remote
Yellow	● : Fault
Red	● : Open/ Opening
Green	● : Close/ Closing



WE-1350, 1700, 2640, 4400, 5200, 6900, 10500 Intelligent Digital Control Unit



WE-17500, 25900 Intelligent Digital Control Unit



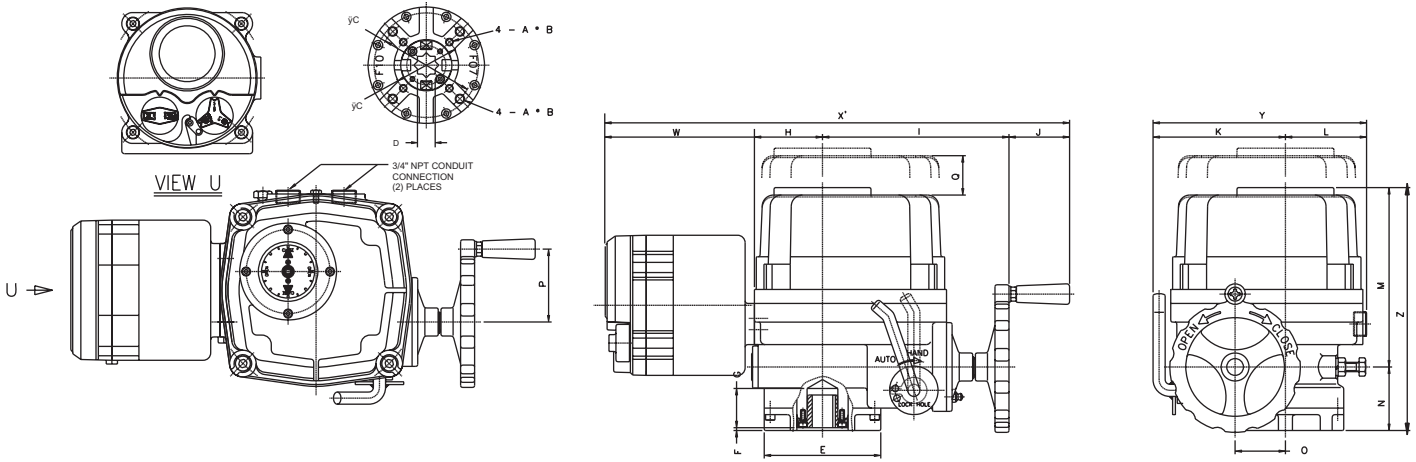
DIMENSIONS

Units (inches)

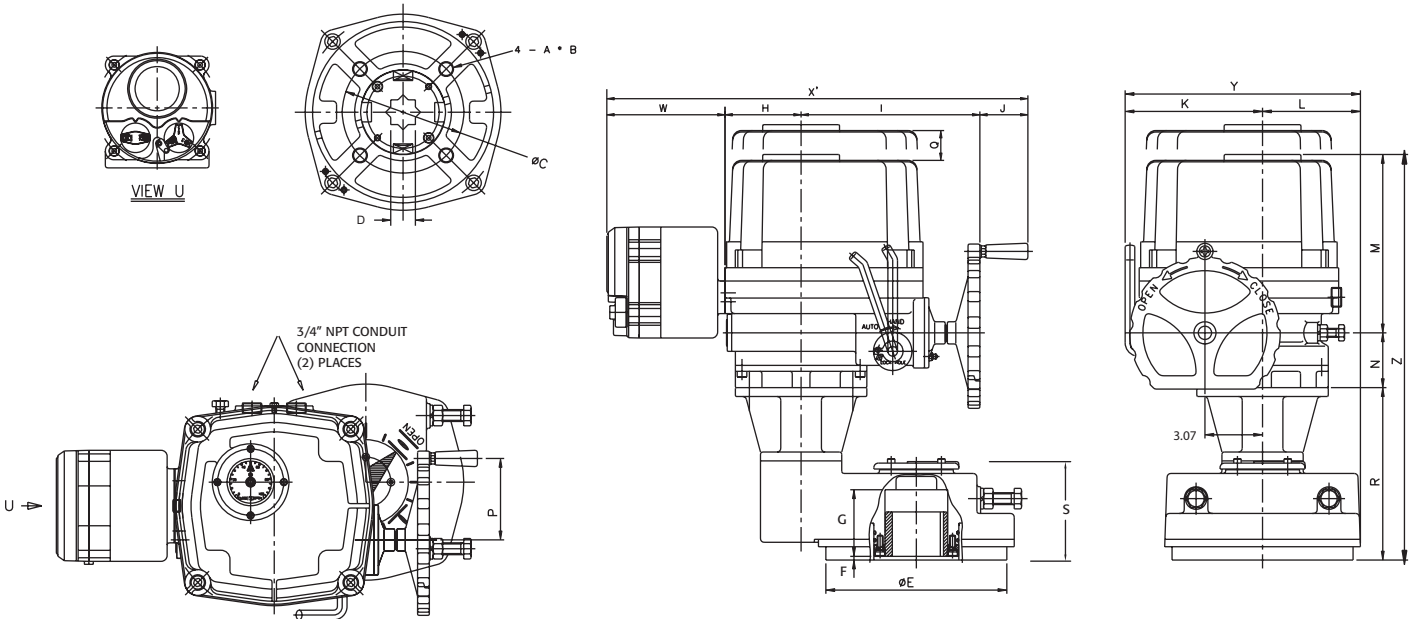
Model	ISO 5211	A	B	C	D sq	E	F	G	H	I	J	K	L	M	N	O	P	Q	R	S	X	Y	Z
WE-1350	F07/F10	M8 / M10	0.47 / 0.59	2.756 / 4.016	0.748	4.92	0.12	1.65	2.87	7.87	2.56	5.59	3.43	7.56	2.68	2.13	3.07	6.30	--	--	13.31	9.02	10.55
WE-1700	F07/F10	M8 / M10	0.47 / 0.59	2.756 / 4.016	0.748	4.92	0.12	1.65	2.87	7.87	2.56	5.59	3.43	7.56	2.68	2.13	3.07	6.30	--	--	13.31	9.02	10.55
WE-2640	F10/F12	M10 / M12	0.59 / 0.71	4.016 / 4.921	1.063	5.83	0.12	1.93	3.23	8.70	2.56	6.30	3.90	8.70	2.72	2.56	3.07	7.09	--	--	14.49	10.20	11.42
WE-4400	F10/F12	M10 / M12	0.59 / 0.71	4.016 / 4.921	1.063	5.83	0.12	1.93	3.23	8.70	2.56	6.30	3.90	8.70	2.72	2.56	3.07	7.09	--	--	14.49	10.20	11.97
WE-5200	F10/F12	M10 / M12	0.59 / 0.71	4.016 / 4.921	1.063	5.83	0.12	1.93	3.23	8.70	2.56	6.30	3.90	8.70	2.72	2.56	3.07	7.09	--	--	14.49	10.20	11.97
WE-6900	F14	M16	0.95	5.512	1.417	7.01	0.12	2.24	4.06	9.53	2.56	7.32	4.37	9.49	2.91	3.07	4.33	8.27	--	--	16.14	11.69	12.99
WE-10500	F14	M16	0.95	5.512	1.417	7.01	0.12	2.24	4.06	9.53	2.56	7.32	4.37	9.49	2.91	3.07	4.33	8.27	--	--	16.14	11.69	12.99
WE-17500	F16	M20	1.18	6.496	1.417	9.65	0.20	3.54	4.06	9.53	2.56	7.32	5.24	9.49	2.91	3.07	4.33	8.27	9.17	5.24	16.14	12.56	22.17
WE-25900	F16	M20	1.18	6.496	1.417	9.65	0.20	3.54	4.06	9.53	2.56	7.32	5.24	9.49	2.91	3.07	4.33	8.27	9.17	5.24	16.14	12.56	22.17

Dimensional Drawing

WE/XE-1350, 1700, 2640, 4400, 5200, 6900, 10500 Semi-integral Control Unit



WE/XE-17500, 25900



DIMENSIONS

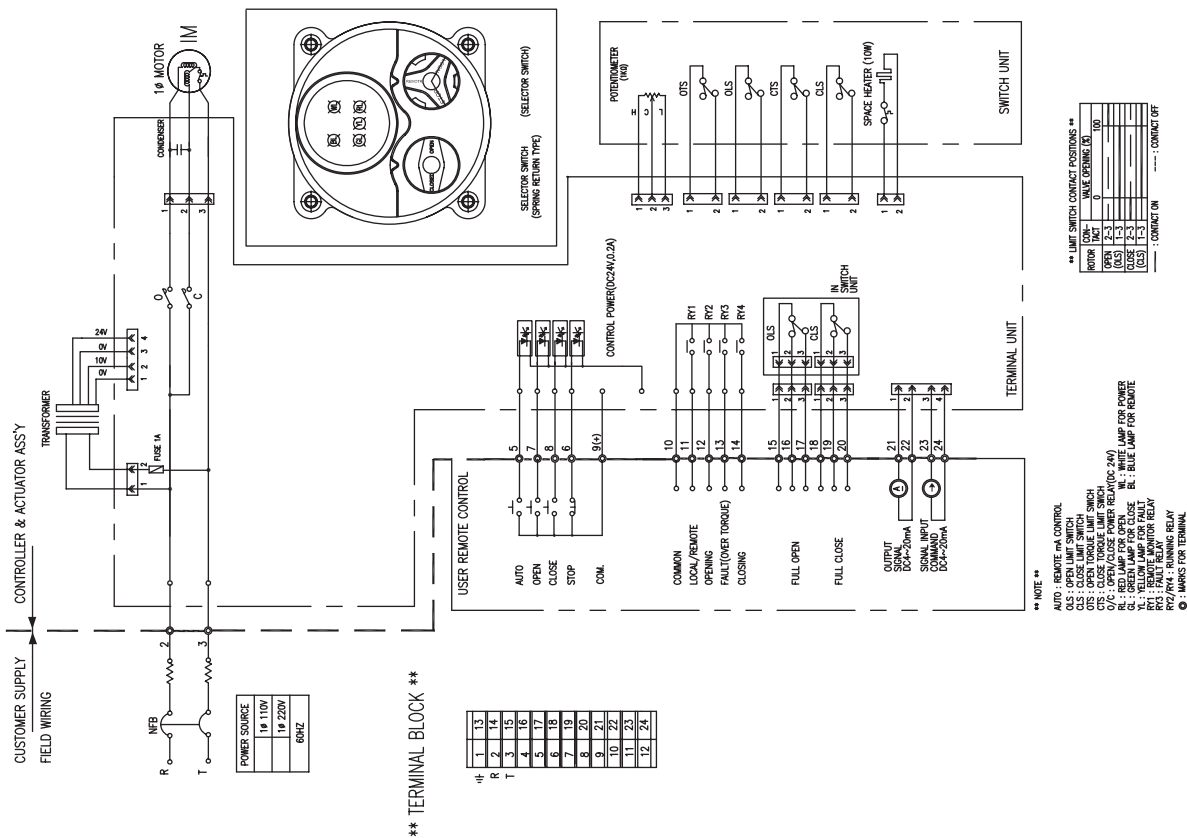
Units (inches)

Model	ISO 5211	A	B	C	D sq	E	F	G	H	I	J	K	L	M	N	O	P	Q	R	S	W	X	Y	Z
WE/XE-1350	F07/F10	M8 / M10	0.47 / 0.59	2.756 / 4.016	0.748	4.92	0.12	1.65	2.87	7.87	2.56	5.59	3.43	7.56	2.68	2.13	3.07	6.30	--	--	6.30	19.61	9.02	10.55
WE/XE-1700	F07/F10	M8 / M10	0.47 / 0.59	2.756 / 4.016	0.748	4.92	0.12	1.65	2.87	7.87	2.56	5.59	3.43	7.56	2.68	2.13	3.07	6.30	--	--	6.30	19.61	9.02	10.55
WE/XE-2640	F10/F12	M10 / M12	0.59 / 0.71	4.016 / 4.921	1.063	5.83	0.12	1.93	3.23	8.70	2.56	6.30	3.90	8.70	2.72	2.56	3.07	7.09	--	--	6.30	14.49	10.20	11.42
WE/XE-4400	F10/F12	M10 / M12	0.59 / 0.71	4.016 / 4.921	1.063	5.83	0.12	1.93	3.23	8.70	2.56	6.30	3.90	8.70	2.72	2.56	3.07	7.09	--	--	6.30	20.79	10.20	11.97
WE/XE-5200	F10/F12	M10 / M12	0.59 / 0.71	4.016 / 4.921	1.063	5.83	0.12	1.93	3.23	8.70	2.56	6.30	3.90	8.70	2.72	2.56	3.07	7.09	--	--	6.30	20.79	10.20	11.97
WE/XE-6900	F14	M16	0.95	5.512	1.417	7.01	0.12	2.24	4.06	9.53	2.56	7.32	4.37	9.49	2.91	3.07	4.33	8.27	--	--	6.30	22.44	11.69	12.99
WE/XE-10500	F14	M16	0.95	5.512	1.417	7.01	0.12	2.24	4.06	9.53	2.56	7.32	4.37	9.49	2.91	3.07	4.33	8.27	--	--	6.30	22.44	11.69	12.99
WE/XE-17500	F16	M20	1.18	6.496	1.417	9.65	0.20	3.54	4.06	9.53	2.56	7.32	5.24	9.49	2.91	3.07	4.33	8.27	9.17	5.24	6.30	22.44	12.56	22.17
WE/XE-25900	F16	M20	1.18	6.496	1.417	9.65	0.20	3.54	4.06	9.53	2.56	7.32	5.24	9.49	2.91	3.07	4.33	8.27	9.17	5.24	6.30	22.44	12.56	22.17

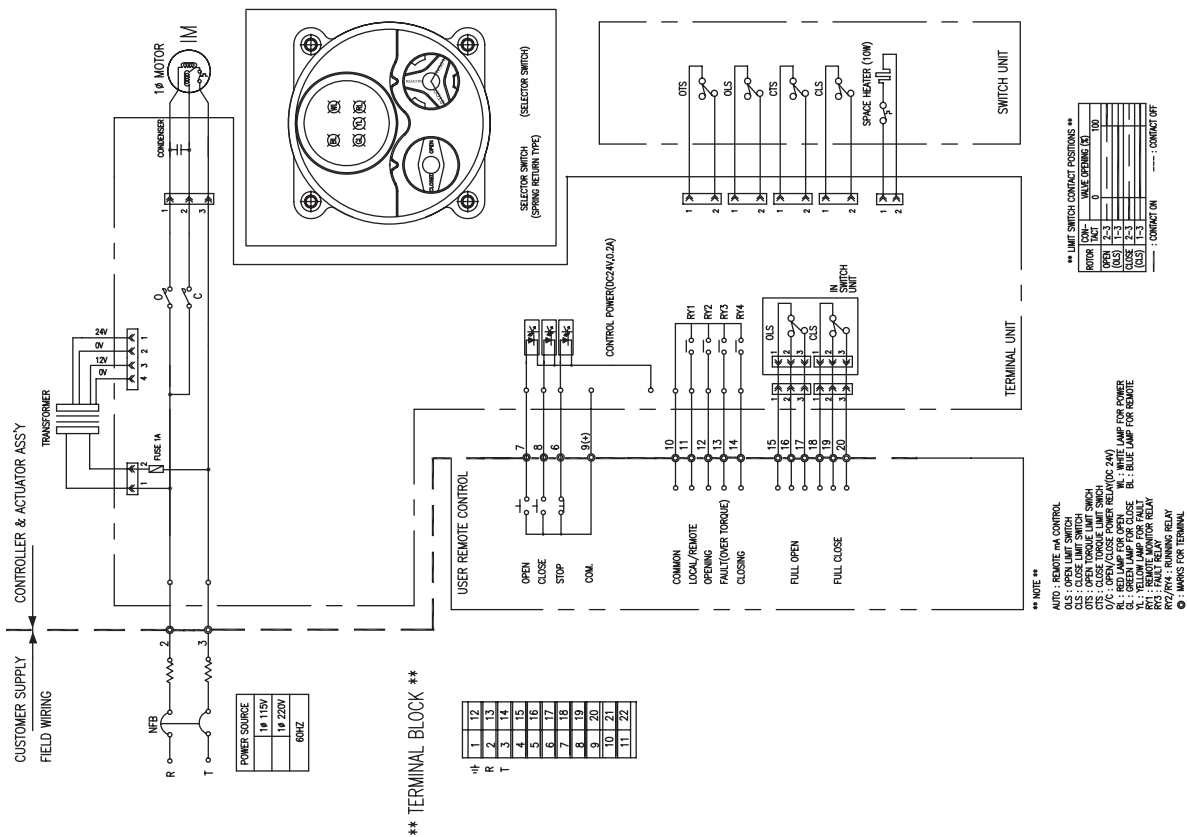
Wiring drawings are provided upon request.

Wiring Connection

SE 1096 Semi-integral Unit 1 Phase/Proportional



SE 1097 Semi-integral Unit 1 Phase/2 Position



Triac WE / XE Series Part Number Reference

ATEX Pending

Model	
WE	Weather Proof
XE	Explosion Proof Design (Eexd II B T4, Eexd II C T4)
FE	Fire Proof Unit (1050°F for 50 Min)
SE	Submersible unit (IP68, 10 meters for 72 Hours)

Control	
Blank	(2) Position Control (Open / Close)
M	Standard Modulating Control Card (TMC3)
D	DHC-100 Modulating Card Ultra precise: Provides 450 points of resolution

Actuator Size	
-500	500 In-Lbs
-690	690 In-Lbs
-1350	1350 In-Lbs
-1700	1700 In-Lbs
-2640	2640 In-Lbs
-4400	4400 In-Lbs
-5200	5200 In-Lbs
-6900	6900 In-Lbs
-10500	10500 In-Lbs
-17500	17500 In-Lbs
-25900	25900 In-Lbs

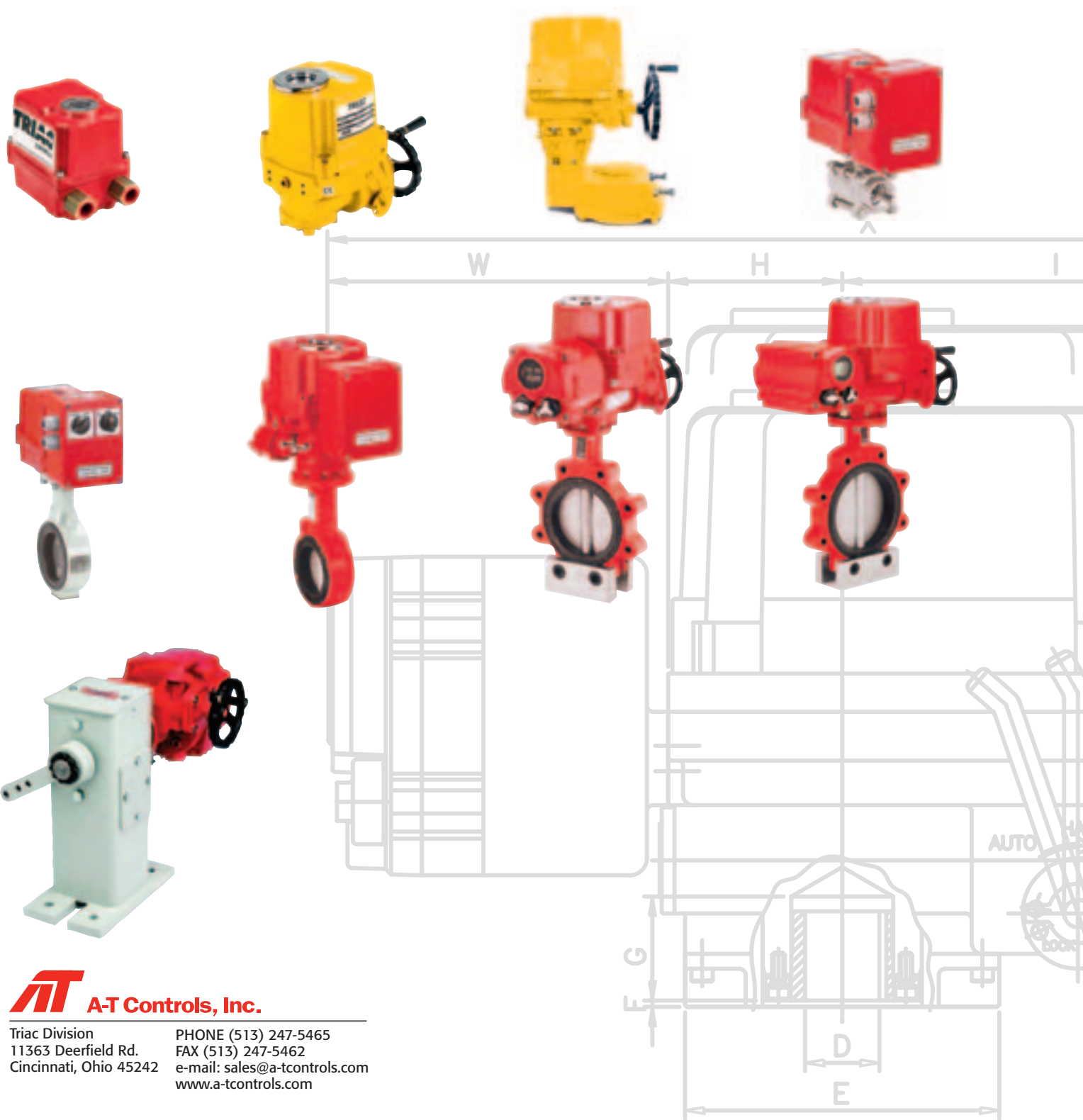
Motor		
X	115VAC/1PH	Place holder only - Omit when at end of part number
A	24V AC/DC	(N/A 4400 - 25900)
B	N/A	
C	24VDC	(N/A 4400 - 25900)
D	24VAC/1PH	(N/A 4400 - 25900)
E	220VAC/1PH	
F	220VAC/3PH	(N/A 500, 690)
H	380/440VAC/3PH	(N/A 500, 690)
J	460/480VAC3PH	(N/A 500, 690)

Options		
X	No options	Place holder only - Omit when at end of part number
B	Semi-integral Control Unit	(N/A 500, 690)
C	Intelligent Digital Control Unit	(N/A 500, 690)
D	Local / Remote Control Switches	(Only 500, 690)
E	Electronic Speed Control Module - 115 VAC only	
F	2 Wire Control & Speed Control - 115 VAC only	
G	End of travel time delay (same in both directions)	
R	2 Wire Control, Relay - 115 VAC control voltage	
S	2 Wire Control, Relay - 24 VAC control voltage	
T	2 Wire Control, Relay - 24 VDC control voltage	

Miscellaneous Options		Note: Add all miscellaneous options to end of part number
Blank	No options	
T	4-20mA Transmitter	
N	1000 Ohm Potentiometer	
O	5000 Ohm Potentiometer	
P	10K Ohm Potentiometer	
X	120° Operation	(N/A 17500 or 25900)
Y	180° Operation	(N/A 17500 or 25900)
Z	270° Operation	(N/A 17500 or 25900)
L	-40° Low Temp Kit	
I	Position Indicator Lamps (Power, Open, Close, Fault)	(N/A 500, 690)
S	(2) additional limit switches (6 total)	(N/A 500, 690)
R	(2) additional torque switches (4 total)	(N/A 500, 690)
XX	Special cycle time	
	Floor Drive Mounting Configuration - Please See Acutrol Floor Drive Catalog	

Example: WEM-1350 (Weather Proof Housing, Modulating Control, model size 1350, 115VAC / 1PH)

WEM-1350XXT (Weather Proof Housing, Modulating Control, model size 1350, 115VAC / 1PH, 4-20mA Transmitter)



AT A-T Controls, Inc.

Triac Division
11363 Deerfield Rd.
Cincinnati, Ohio 45242

PHONE (513) 247-5465
FAX (513) 247-5462
e-mail: sales@a-tcontrols.com
www.a-tcontrols.com