

2/2 WAY DIRECT ACTING SOLENOID VALVE, G 1/4" ÷ G 1/2"

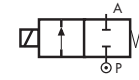
COMMON FEATURES

Body material: brass (CW617N EN 12165)

Operator material: stainless steel

Protection class: IP 65 (with connector and gasket)

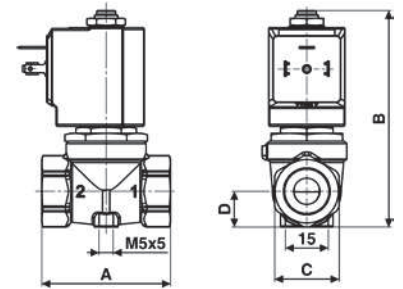
TYPE: D237/238/239



Normally Closed



DIMENSIONS & WEIGHTS		D237	D238	D239
G connection	[ISO 228]	1/4"	3/8"	1/2"
A	[mm]	54	54	54
B	[mm]	89	89	89
C	[mm]	Hex 27	Hex 27	Hex 27
D	[mm]	15	15	15
weight	[kg]	0.45	0.4	0.4



Flow direction overseat 1 → 2

VALVE	nominal Ø	flow rate Kvs	OPD		
			min.	max. AC	max. DC
code	[mm]	[l/min]	[barg]	[barg]	[barg]
D237DVU	10.5	21	0	0.4	0.2
D238DVU	10.5	25	0	0.4	0.2
D239DVU	10.5	25	0	0.4	0.2

COILS	
code	[Volts/Hz]
7250	24v DC
7200	24v 50/60Hz
7400	110v 50Hz - 120v 60Hz
7600	200v 50Hz - 220v 60Hz
7700	230v 50Hz - 240v 60Hz

D237/238/239DVU - FKM seal, NC -

Media: water, oil, air

Media temperature: -10°C ÷ +130°C

Ambient temperature: -10°C ÷ +50°C

Seal material: FKM

Coil power: AC 18vA (holding)

AC 36vA (inrush)

DC 14w

OPTIONS

NBR seal, temperature max. 90°C (e.g. code D237DBU)

EPDM seal, temperature max. 120°C (e.g. code D239DEU)

VALVE	nominal Ø	flow rate Kvs	OPD		
			min.	max. AC	max. DC
code	[mm]	[l/min]	[barg]	[barg]	[barg]
D238DVL	4.0	6	0	8	5
D238DVN	5.0	7.5	0	5	2
D238DVP	6.0	8.5	0	3.5	1.1
D239DVH	3.0	4.5	0	17	12
D239DVL	4.0	6	0	8	5
D239DVN	5.0	7.5	0	5	2
D239DVP	6.0	8.5	0	3.5	1.1

COILS	
code	[Volts/Hz]
7250	24v DC
7200	24v 50/60Hz
7400	110v 50Hz - 120v 60Hz
7600	200v 50Hz - 220v 60Hz
7700	230v 50Hz - 240v 60Hz

D238/239 - FKM seal, NC -

Media: water, oil, air

Media temperature: -10°C ÷ +130°C

Ambient temperature: -10°C ÷ +50°C

Orifice material: stainless steel (1.4305 EN 10088/AISI 303)

Seal material: FKM

Coil power: AC 18vA (holding)

AC 36vA (inrush)

DC 14w

OPTIONS

NBR seal, temperature max. 90°C (e.g. code D239DBP)

EPDM seal, temperature max. 120°C (e.g. code D238DEP)

NOTES

Same operator as D262/263DV-

VALVE	nominal Ø	flow rate Kvs	OPD		
			min.	max. AC	max. DC
code	[mm]	[l/min]	[barg]	[barg]	[barg]
D238DLH	3.0	4.5	0	9	8
D239DLI	3.5	5.0	0	9	5
D238DLN	5.0	7.5	0	5	2

COILS	
class 'H' only	
code	[Volts/Hz]
7251	24v DC
7201	24v 50/60Hz
7401	110v 50Hz - 120v 60Hz
7601	200v 50Hz - 220v 60Hz
7701	230v 50Hz - 240v 60Hz

D238/239 - FILLED PTFE seal, NC -

Media: steam

Media temperature: -10°C ÷ +180°C

Ambient temperature: -10°C ÷ +70°C

Orifice material: stainless steel (1.4305 EN 10088/AISI 303)

Seal material: Sigodur (filled PTFE)

Coil power: AC 18vA (holding)

AC 36vA (inrush)

DC 14w

NOTES

Seamless tube as standard

Same operator as D262/263DL-