

## 2/2 WAY DIRECT ACTING SOLENOID VALVE, G 1/8"

### COMMON FEATURES

Media: water, oil, air

Media temperature:  $-10^{\circ}\text{C} \div +130^{\circ}\text{C}$

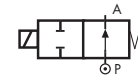
Ambient temperature:  $-10^{\circ}\text{C} \div +50^{\circ}\text{C}$

Body material: brass (CW617N EN 12165)

Operator material: stainless steel

Protection class: IP 65 (with connector and gasket)

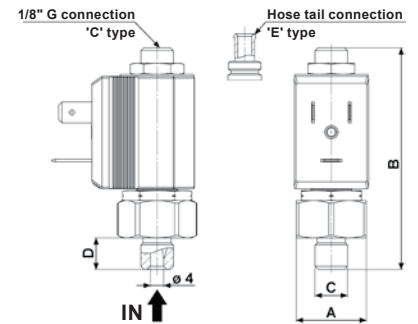
### TYPE: RB214



Normally Open



| DIMENSIONS & WEIGHTS |           | RB214 |
|----------------------|-----------|-------|
| <b>G connection</b>  | [ISO 228] | 1/8"  |
| <b>A</b>             | [mm]      | 21    |
| <b>B</b>             | [mm]      | 66.5  |
| <b>C</b>             | [mm]      | 1/8"  |
| <b>D</b>             | [mm]      | 9.5   |
| <b>weight</b>        | [kg]      | 0.06  |



| VALVE           | nominal $\varnothing$ | flow rate Kvs | OPD    |         |         | COILS |                       |
|-----------------|-----------------------|---------------|--------|---------|---------|-------|-----------------------|
|                 |                       |               | min.   | max. AC | max. DC | code  | [Volts/Hz]            |
| code            | [mm]                  | [l/min]       | [barg] | [barg]  | [barg]  | code  | [Volts/Hz]            |
| <b>RB214CVD</b> | 1.7                   | 1.2           | 0      | 14      | 14      | 2250  | 24v DC                |
|                 |                       |               |        |         |         | 2200  | 24v 50/60Hz           |
|                 |                       |               |        |         |         | 2400  | 110v 50Hz - 120v 60Hz |
|                 |                       |               |        |         |         | 2600  | 200v 50Hz - 220v 60Hz |
|                 |                       |               |        |         |         | 2700  | 230v 50Hz - 240v 60Hz |

### RB214 - FKM seal, NO -

Seal material: foodgrade FKM

Coil power: AC 10v<sub>A</sub> (holding)

AC 16v<sub>A</sub> (inrush)

DC 7w

### OPTIONS

Armature tube with hose tail  $\varnothing$  6 mm (e.g. code RB214EVD)

EPDM seal, temperature max. 120°C (e.g. code RB214CED)

