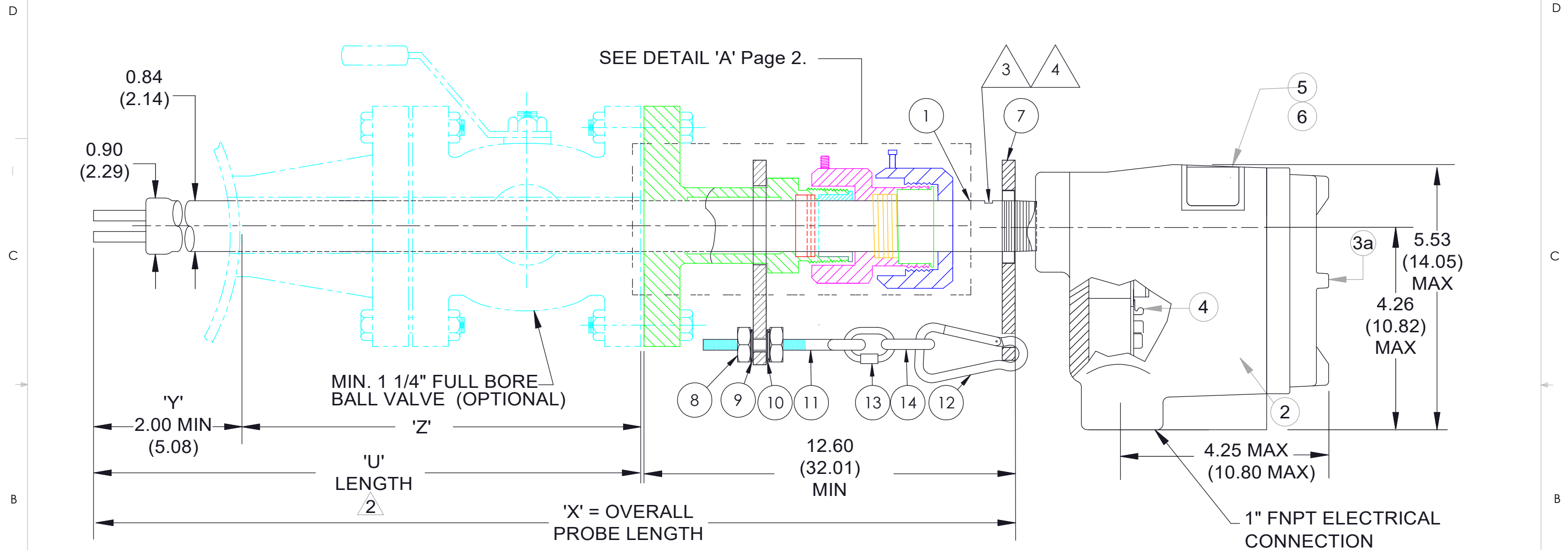


REVISIONS				
ZONE	REV.	DESCRIPTION	DATE	APPROVED
All	1	Initial Release	19MAR23	



NOTES:

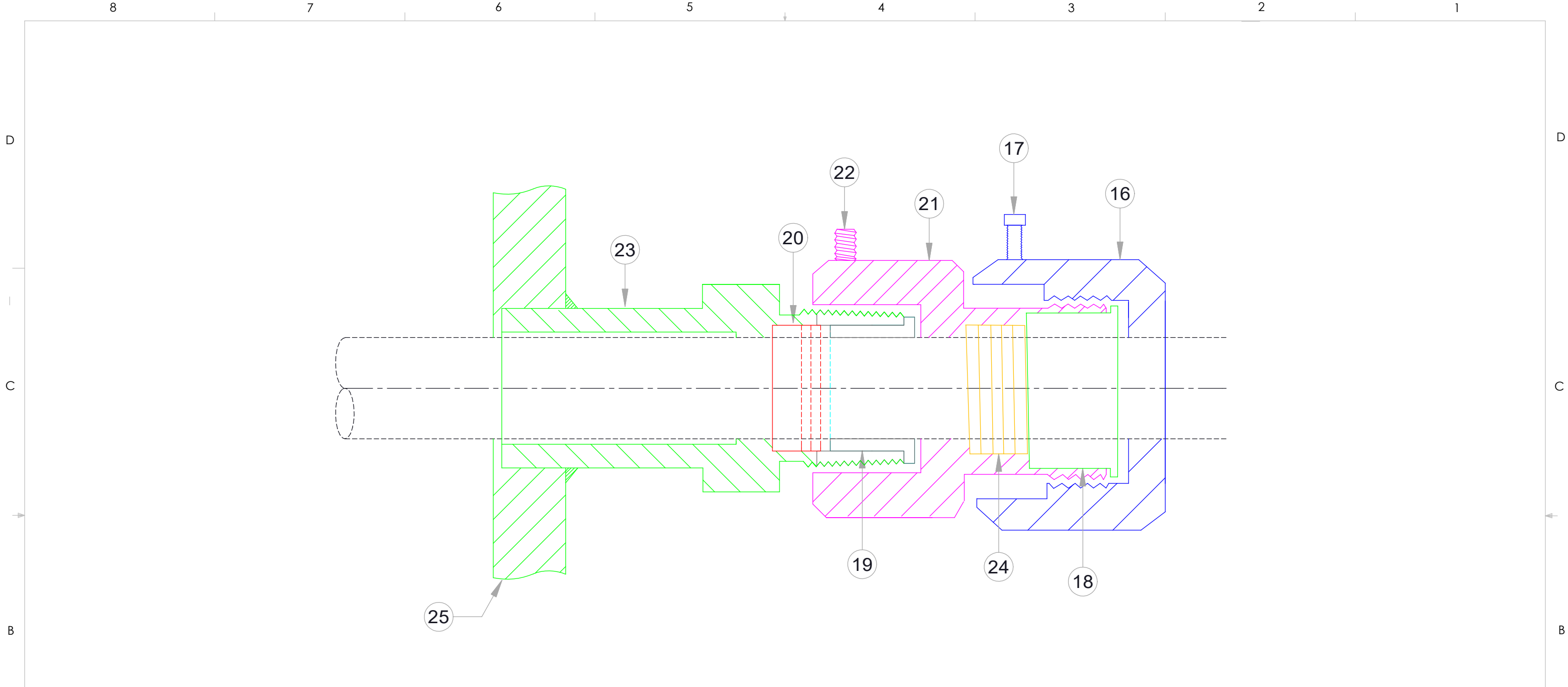
- 1. ① to ⑥ see parts list.
- ②. Customer specified 'U' length. 'U' =
- ③. ④. Install top and bottom mounted units in horizontal pipe with flow arrow \longleftrightarrow parallel to flow direction.
- ⑤. Flange: Size: _____ Material:

UNLESS OTHERWISE SPECIFIED:		NAME	DATE
DIMENSIONS ARE IN INCHES	DRAWN	NSP	19MAR23
TOLERANCES: ANGULAR: 0.5° ONE PLACE DECIMAL ±0.1 TWO PLACE DECIMAL ±0.02 THREE PLACE DECIMAL ±0.007	CHECKED		
INTERPRET GEOMETRIC TOLERANCING PER:	ENG APPR.		
MATERIAL	COMMENTS:		
FINISH			
DO NOT SCALE DRAWING			



TITLE:
CLASSIC 814 Series
 Packing Gland - Flanged - 1" MNPT
 Low Pressure (125 PSI) w/Safety Chain
 Local Electronics

SIZE	DWG. NO.	REV
B	814-RAAYYYAJ-IXXXX-LE	1



NOTES:

- 1. All components - 316 Stainless Steel
(except packing)

UNLESS OTHERWISE SPECIFIED:		NAME	DATE
DIMENSIONS ARE IN INCHES	DRAWN	NSP	19MAR23
TOLERANCES:	CHECKED		
ANGULAR: 0.5°	ENG APPR.		
ONE PLACE DECIMAL ±0.1			
TWO PLACE DECIMAL ±0.02			
THREE PLACE DECIMAL ±0.007			
INTERPRET GEOMETRIC TOLERANCING PER:	COMMENTS:		
MATERIAL			
FINISH			
DO NOT SCALE DRAWING			

KAYDEN[®]
I N S T R U M E N T S

TITLE: **CLASSIC 814 Series**
Packing Gland - Flanged - 1" MNPT
Low Pressure (125 PSI) w/Safety Chain
Local/Remote Electronics: Detail 'A' Drawing

SIZE	DWG. NO.	REV
B	814-RAAYYYAJ-IXXXX-LE	1

BOM			
ITEM	DESCRIPTION	PART NUMBER	QTY
*1	Sensor Assembly, (probe only)	P32-RAEJXXXX	1
2	Flameproof Enclosure (3/4" x 1" FNPT)	N10-100A-D	1
3a	<input checked="" type="checkbox"/> Glass Lens Cover - Flameproof	M10-1G00	1
3b	<input type="checkbox"/> Blind Cover - Flameproof	M10-1B00	1
4	CLASSIC Electronics Module (12-24 VDC, 115-230 VAC)	L10-800-C-E	1
5	Nameplate, Foil	2400-0002	1
6	Nameplate, Overlay	2401-0001	1
7	Rear Support, Low Pressure w/Chain	2510-0311	1
8	5/16" Nut, SS	2510-0418	2
9	5/16" Lock Washer, SS	2510-0424	2
10	5/16" Flat Washer, SS	2510-0425	2
11	5/16" x 4 1/4" Eyebolt-Galv. CS	2510-0433	1
12	Snap Spring, 1/2" SS	2510-0435	1
13	3/16" Quick Link, SS	2510-0436	1
14	3/16" Zinc Plated Chain	2510-0437	4
15	Hardware Reducer 3/4" x 1/2" (Optional)	2510-0021	1
***** ITEMS 16 THROUGH 25 REFER TO PAGE 2 (DETAIL 'A') *****			
16	Nut	2510-0413-2	1
17	Hex Cap Screw, 1/4" - 28 x 1/2" SS	2540-0020	2
18	Packing Follower	2510-0307-B	2
19	Seal Follower	2510-0304-B	1
20	Seal (U-Cup)	2510-0440	1
21	Nut w/Coupling	2510-0306-B	17"
22	Stainless Steel Set Screw, 10-24 x 3/8" Allen	2540-0021	1
23	Sleeve	2510-0300-B	1
24	1/8" SQ. Teflon	Z2510-0429	1
25	Flange	YYY	1

NOTES:

*1. a) **Sensor Assembly Selection Guide:**

P22-RAAYYYAJ-IXXXX-M Where XXXX = Desired Probe 'U' Length.


eg. 'U' Length = 3.5" = P22-RAAYYYAT-I0035-M or 36" = P22-RAAYYYAJ-I0360-M

b) I = Imperial (inches)

M = Metric (cm)

c) P22-RAAYYYAJ-IXXXX-M (Where YYY = Code for type of flange)

eg. Flange = 1 1/2". 150# = (P22-RAA131AJ-IXXXX-M) See flange list

UNLESS OTHERWISE SPECIFIED:		NAME	DATE	
DIMENSIONS ARE IN INCHES	DRAWN	NSP	19MAR23	
TOLERANCES: ANGULAR: 0.5° ONE PLACE DECIMAL ±0.1 TWO PLACE DECIMAL ±0.02 THREE PLACE DECIMAL ±0.007	CHECKED			
	ENG APPR.			
INTERPRET GEOMETRIC TOLERANCING PER:				TITLE:
MATERIAL				Parts List - CLASSIC 814 Series Packing Gland - Flanged - 1" MNPT Low Pressure (125 PSI) w/Safety Chain Local Electronics
FINISH	COMMENTS:	SIZE	DWG. NO.	REV
DO NOT SCALE DRAWING		B	814-RAAYYYAJ-IXXXX-LE	1
		SCALE: NTS	WEIGHT:	SHEET 3 OF 3