

## 2/2 WAY DIRECT ACTING SOLENOID VALVE, G 1/8" - G 1/4"

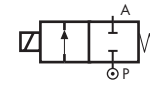
### COMMON FEATURES

Body material: stainless steel (1.4305 EN 10088/AISI 303)  
 Orifice material: stainless steel (1.4305 EN 10088/AISI 303)  
 Operator material: stainless steel  
 Protection class: IP 65 (with connector and gasket)

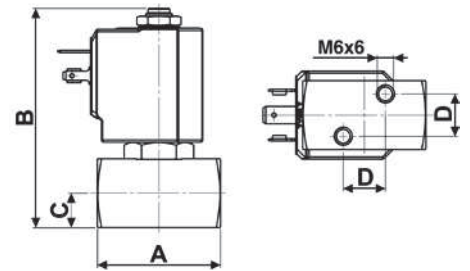
### OPTIONS

Available with body thread connection 1/8" (e.g. code D298DVC), performance ratings remain the same as D299DVC.  
 Silver shading ring (e.g. code D299DVCA)  
**NPT** connection on request, minimum batch may be required (e.g. code D299DVCN)

### TYPE: D298/299



Normally Closed



Flow direction overseat 1 → 2

DIMENSIONS & WEIGHTS		D298	D299
<b>G connection</b>	[ISO 228]	1/8"	1/4"
<b>A</b>	[mm]	45	45
<b>B</b>	[mm]	80	80
<b>C</b>	[mm]	12.5	12.5
<b>D</b>	[mm]	15.4	15.4
<b>weight</b>	[kg]	0.36	0.36

VALVE	nominal Ø	flow rate Kvs	OPD			COILS	
			min.	max. AC	max. DC	code	[Volts/Hz]
code	[mm]	[l/min]	[barg]	[barg]	[barg]	code	[Volts/Hz]
<b>D299DVC</b>	1.5	1.2	0	24	24	7250	24v DC
<b>D299DVG</b>	2.5	3.3	0	18	18	7200	24v 50/60Hz
<b>D299DVH</b>	3.0	4.5	0	15	10	7400	110v 50Hz - 120v 60Hz
<b>D299DVL</b>	4.0	6.0	0	10	5.5	7600	200v 50Hz - 220v 60Hz
<b>D299DVN</b>	5.0	7.5	0	5	2.5	7700	230v 50Hz - 240v 60Hz

### D298/299 - FKM seal, NC -

**Media:** water, oil, air and aggressive fluids  
**Media temperature:** -10°C ÷ +130°C  
**Ambient temperature:** -10°C ÷ +50°C  
**Seal material:** foodgrade FKM  
**Coil power:** AC 18vA (holding)  
 AC 36vA (inrush)  
 DC 14w

### OPTIONS

**EPDM** seal, temperature max. 120°C (e.g. code D298DEH)  
**ATEX** version see page TIS \*11 12\*

VALVE	nominal Ø	flow rate Kvs	OPD			COILS	
			min.	max. AC	max. DC	code	[Volts/Hz]
code	[mm]	[l/min]	[barg]	[barg]	[barg]	code	[Volts/Hz]
<b>D299DKE</b>	2.0	2.3	0	20	20	7250	24v DC
<b>D299DKG</b>	2.5	3.3	0	18	16	7200	24v 50/60Hz
<b>D299DKH</b>	3.0	4.5	0	15	8	7400	110v 50Hz - 120v 60Hz
						7600	200v 50Hz - 220v 60Hz
						7700	230v 50Hz - 240v 60Hz

### D298/299 - KALREZ® seal, NC -

**Media:** chemicals  
**Media temperature:** -10°C ÷ +130°C  
**Ambient temperature:** -10°C ÷ +50°C  
**Seal material:** Kalrez® Spectrum™ 6375  
**Coil power:** AC 18vA (holding)  
 AC 36vA (inrush)  
 DC 14w

### OPTIONS

Protective treatment (e.g. code D299DKEE)

VALVE	nominal Ø	flow rate Kvs	OPD			COILS	
			min.	max. AC	max. DC	code	[Volts/Hz]
code	[mm]	[l/min]	[barg]	[barg]	[barg]	code	[Volts/Hz]
<b>D299DRB1</b>	1.2	0.7	0	200	110	72Z1	24v DC
<b>D299DRC1</b>	1.5	1.2	0	200	80	72K1	24v 50/60Hz
<b>D299DRE1</b>	2.0	2.3	0	140	30	74K1	110v 50Hz - 120v 60Hz
<b>D299DRG1</b>	2.5	3.3	0	90	23	77K1	230v 50Hz - 240v 60Hz
<b>D299DRH1</b>	3.0	4.5	0	50	14		

### D298/299 - RUBY seal, NC -

**Media:** water, oil, air and aggressive fluids  
**Media temperature:** -10°C ÷ +130°C  
**Ambient temperature:** -10°C ÷ +50°C  
**Seal material:** Ruby  
**Coil power:** AC 25vA (holding)  
 AC 50vA (inrush)  
 DC 22w

### NOTES

Seamless tube as standard  
 Ⓢ Not 100% leak-proof when used with air/gases.  
 Approximate leak rate is 1,5 ml/min at max. OPD.

**ATTENTION:** When high pressure valves are supplied without a coil, their nameplates display the max. OPD of the valve when equipped with an AC (25vA) and DC (22w) coil (as shown in the table above). **When using alternative coil power ratings please ensure to request separately the appropriate nameplate at time of order.**